

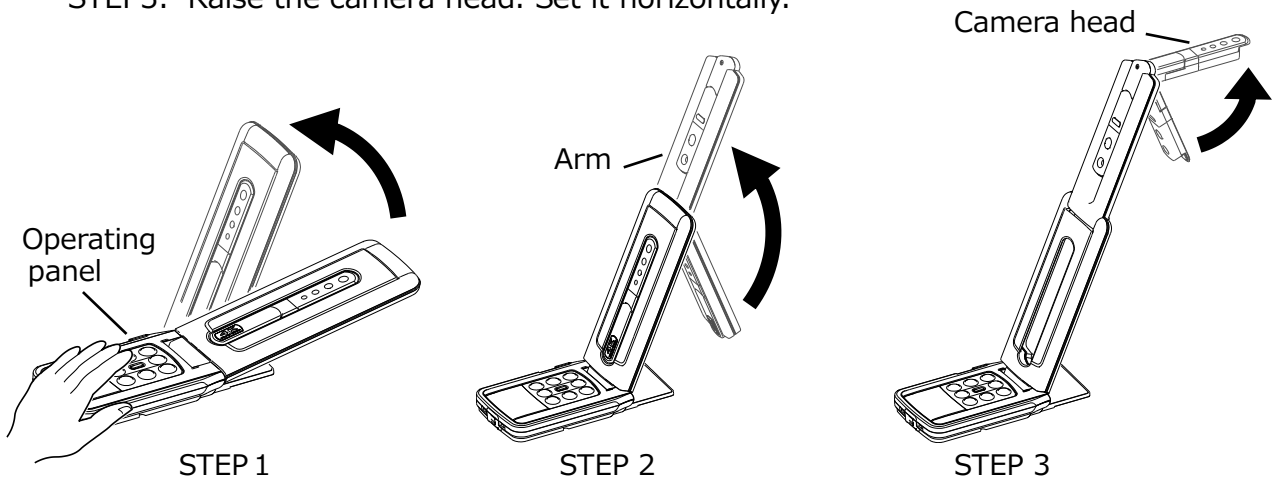
1 PREPARATION AND CONNECTION

◆SETTING UP

STEP1. Raise the body while holding the operating panel.

STEP2. Raise the arm as indicated by an arrow.

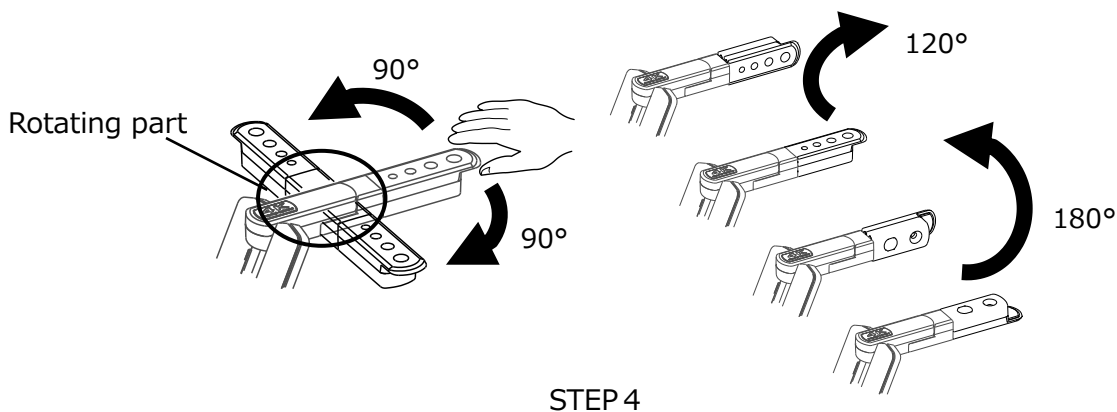
STEP3. Raise the camera head. Set it horizontally.



CAUTION

- Be careful not to pinch your fingers when moving the arm.
- Do not hold the arm or camera head when carrying the MX-P.
- Be careful not to give an impact to the camera head.

STEP4. Rotate the camera head according to the shooting direction.

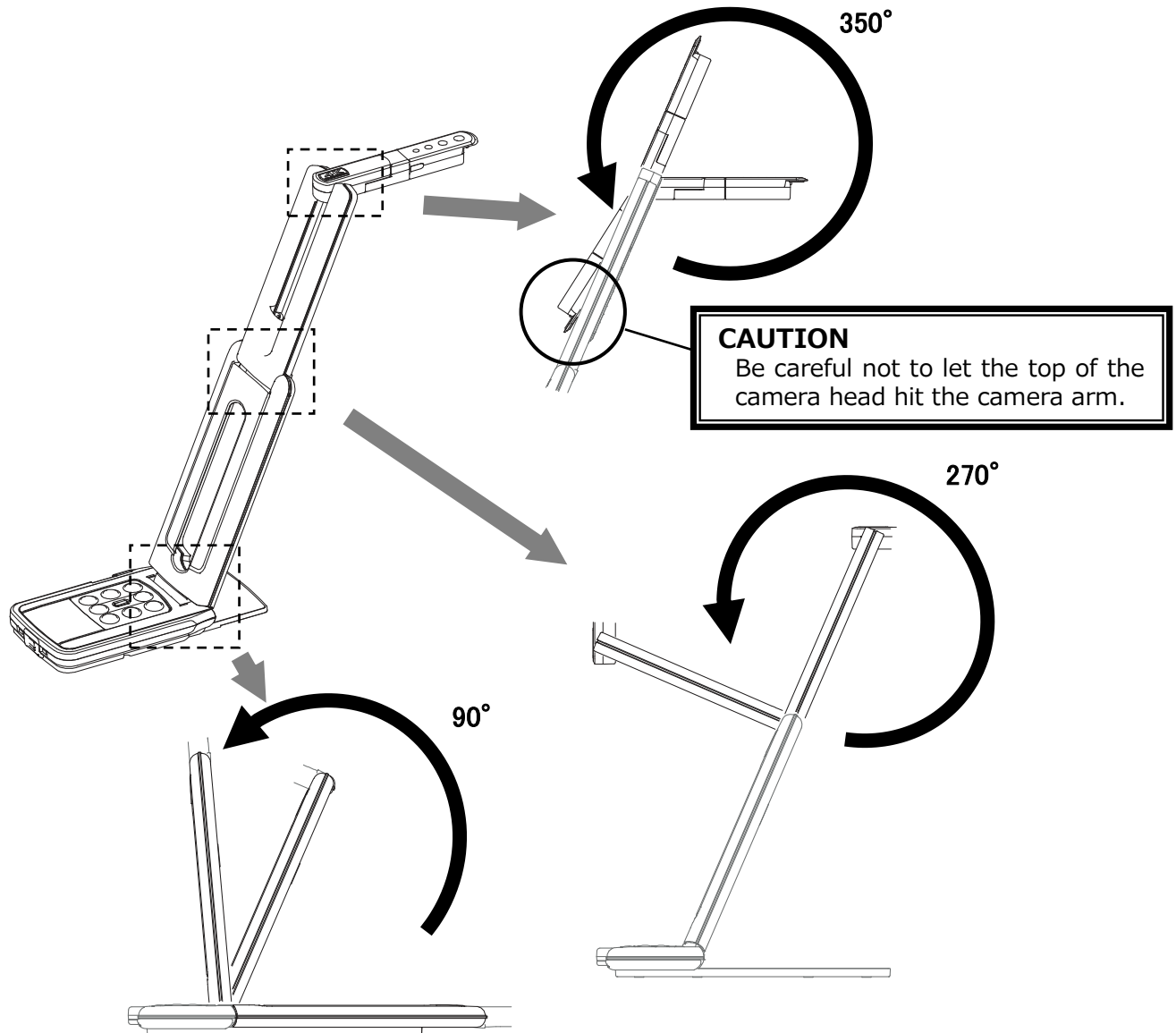


CAUTION

This product uses static electricity sensitive components.
In order to avoid malfunction from static electricity, hold the edge of the camera head to rotate the camera head.
Do not touch the rotating part.

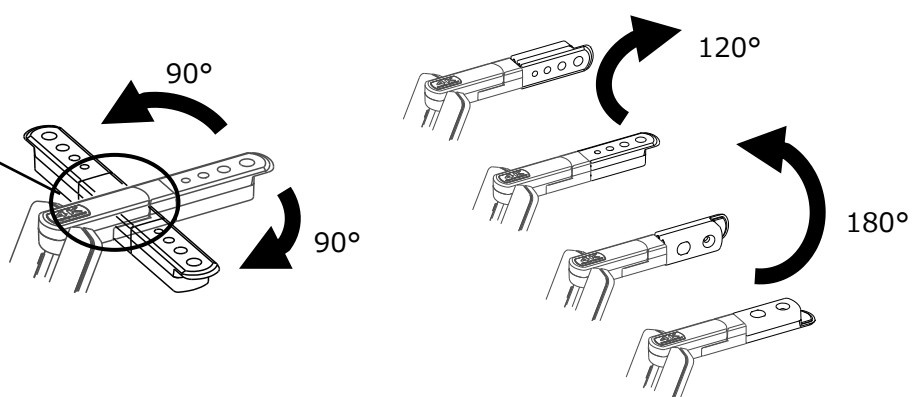
◆MOVING PARTS OF THE MX-P

The MX-P can be moved as shown below.





Camera head

Rotating part



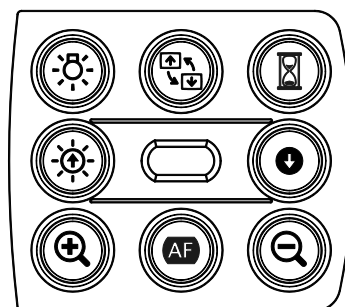
2 USING THE PRODUCT

◆ADJUSTING THE SIZE



The size of the image can be adjusted using [ / ] buttons on the operating panel.

NOTE

The maximum zoom ration is 16x (digital zoom).
The image quality will be degraded when using the digital zoom.




◆ADJUSTING THE BRIGHTNESS

The brightness of the image can be adjusted using [ / ] buttons on the operating panel. The brightness does not change automatically according to the brightness of the shooting environment.

To initialize the brightness level, press these buttons at the same time.

◆ADJUSTING THE FOCUS

Press [] on the operating panel to automatically focus on the subject.


◆PAUSING THE IMAGE

Press [] on the operating panel to pause the camera image.


Press the button again to restart.

※The Status LED flashes yellow when the camera image is paused while the power is supplied with the AC adapter.

◆ROTATING THE IMAGE

Press [] on the operating panel to rotate the image by 180°.

◆TURNING THE LED LIGHTING ON/OFF

Press [] on the operating panel to ON/OFF the LED lighting.

CAUTION

- To take shots of people, turn the LED lighting OFF.
- Make sure that the light from the LED lighting does not shine directly into your eyes.
- This product is equipped with a high-brightness LED. You can safely use it to light up the object. The brightness will gradually decrease with long-term use. This is not a malfunction but a characteristic of the LED.
- Do not touch the LED lighting while it is on as it may become very hot.